

HSC Course Assessment Booklet 2020



WINDSOR
HIGH SCHOOL

Table of Contents

	Page
Introduction	2
Higher School Certificate Credentials	3
HSC Assessment Marks	3
The ATAR	3
School Assessment Policy	4
Application for Consideration/Extension	9
Examination Rules	10
Senior Assessment Task Cover Sheet	11
Assessment Calendar	13
HSC Assessment Schedules	
English Courses	
Advanced English	14
Standard English	15
English Studies	16
Mathematics Courses	
Mathematics	17
Mathematics Standard 1	18
Mathematics Standard 2	19
Science Courses	
Biology	20
Earth and Environmental Science	21
HSIE Courses	
Business Studies	22
Legal Studies	23
Modern History	24
Society and Culture	25
Society and Culture Life Skills	26
Work Studies	27
PD/H/PE Courses	
Community and Family Studies	28
Community and Family Studies Life Skills	29
PD/H/PE	30
Sport Lifestyle and Recreation	31
CAPA Courses	
Drama	32
Music 1	33
Visual Arts	34
TAS Courses	
Engineering Studies	35
Industrial Technology Timber	36
Software Design And Development	37
Vocational Education and Training Courses	
Entertainment	39
Entertainment Specialisation	40
Hospitality	41
Metals and Engineering	42
Primary Industries	43

1. **INTRODUCTION**

Your performance in your Higher School Certificate Assessment is at least as important as your performance in the H.S.C. Examination. The NSW Educational Standards Authority (NESA) has set requirements for both schools and students. You must be aware of these requirements. You can get further information of these requirements or any other matter relating to senior assessment by asking your teachers at school or NESA website <https://www.educationstandards.nsw.edu.au/wps/portal/nesa/home>.

Read this handbook carefully and check that you understand every part of it.

The purpose of the Higher School Certificate assessment scheme is to provide students, potential employers and tertiary institutions with an idea of the relative ability of students and their capacity to work *over time* towards achievements in a wider range of objectives than can be measured by an examination. The assessment measures performance in the WHOLE course, but does not take into account interests, attitudes or conduct.

1.1 **THE HIGHER SCHOOL CERTIFICATE**

To be eligible for the award of the **Higher School Certificate**, students must

- a) have studied and satisfied NESA requirements for the Stage 5 RoSA
- b) study a pattern of courses required by NESA for the time required (see 1.2)
- c) have a satisfactory record of attendance and application in their studies
- d) complete the requirements for a sufficient number of courses, including practical, oral or project works
- e) complete assessment requirements for a sufficient number of courses, and
- f) sit for and make a serious attempt at the Higher School Certificate examination in a sufficient number of Board developed courses, in compliance with examination procedures.

1.2 **PATTERN OF STUDY**

To qualify for the Higher School Certificate, students must study a pattern of Preliminary and HSC courses. The HSC pattern **MUST** include:

- a) satisfactory completion of 12 Units at Preliminary level
- b) at least 10 units, of which 6 units must be from Board developed courses
- c) at least 2 units of a Board developed course in English
- d) at least 3 courses of 2 units or greater
- e) at least 4 subjects

1.3 **SATISFACTORY COMPLETION OF COURSE**

A student will be considered to have satisfactorily completed a course if, in the Principal's view, there is sufficient evidence that the student has:

- a) followed the course developed or endorsed by NESA
- b) applied themselves with diligence and sustained effort to the set tasks and experiences provided in the course by the school
- c) achieved some or all course outcomes.

N.B. Principals may determine that as a result of absence, the course completion criteria may not have been met. Absence will be regarded seriously by Principals, who must give students early warning of the consequences of such absences.

2. HIGHER SCHOOL CERTIFICATE CREDENTIALS

2.1 THE HIGHER SCHOOL CERTIFICATE

The Higher School Certificate is a TESTAMUR document issued by NESA, which states that a student has met all of the requirements and has been awarded an HSC.

2.2 THE HIGHER SCHOOL CERTIFICATE RECORD OF ACHIEVEMENT

This is the document which is a cumulative record of all Preliminary and HSC courses satisfactorily completed. It shows examination marks, moderated assessment marks, HSC marks and Performance bands for all courses completed except for Life Skills courses and some Vocational Education and Training (VET) courses.

2.3 COURSE REPORTS

For every Board Developed HSC course (except Life Skills courses and VET courses) a single page Course Report is issued. It shows the assessment mark and the examination mark, the course performance scale (including the band descriptions and the minimum standard expected for the course) and the distribution of HSC marks for the statewide candidature of that course. The student's HSC mark for the course is shown on the performance scale.

2.4 CERTIFICATES

Certificates are awarded to students, in VET courses, who successfully complete all requirements of an AQF VET Certificate. It lists all units of competency satisfactorily completed.

3. HSC ASSESSMENT MARKS

Each school runs an Assessment Program for its students in each course and reports students' Assessment Marks to NESA. Every school, therefore, assesses its own students individually on work done for each HSC course provided at that school.

Schools use different Assessment Tasks, have different standards of marking and have students of varying abilities. Because of these differences, the process of moderation is needed. The assessment mark provided by the school will be "moderated" (adjusted) according to the school's performance in the external HSC examination in that course.

Although the actual Assessment submitted by the school may change, the order of merit and the relative differences between students established by the school will not change.

4. SCALING FOR THE AUSTRALIAN TERTIARY ADMISSION RANK (ATAR)

A candidate's ATAR is based on the scaled aggregate of the marks in the best ten units in Board Developed HSC courses, subject to the following conditions:

- a) at least two units of English must be included;
- b) at least three Board Developed courses of two unit value or greater must be included;
- c) courses from at least four subjects must be included;
- d) at most, two units of category B courses may be included.

The Universities Technical Committee on Scaling carries out a further scaling process, which leads to the calculation of each student's Australian Tertiary Admissions Rank (ATAR).

The marks awarded to each student in each course are re-adjusted taking into account the general ability level of the group of students doing each course. This general ability level of each group is calculated by considering their performances on all the courses taken by the group. Only after this scaling process is it valid to add up the marks awarded to a student and use this total to calculate the ATAR.

5. THE SCHOOL'S ASSESSMENT POLICY

5.1 ASSESSMENT PROGRAM

Each school has to develop an Assessment Program for each course, in practical terms; this means that the school is required to:

- a) set tasks which will be used to measure student performance in each specified component of the course and focus on outcomes;
- b) specify a mark / weighting for each task;
- c) inform students of the requirements of each course;
- d) keep records of each student's performance on each task;
- e) provide students with information on their progress.

NESA indicates that, for a 2 Unit HSC course, an appropriate assessment schedule would have a range of tasks types and limit the number of tasks to 3 - 5, including the major examinations. Different courses may have different numbers and types of tasks.

This handbook sets out the weightings of the different components assessed in each course, as well as the value, nature and approximate timing of each assessment task. Further details about each task can be obtained from the course teacher or the Head Teacher for the subject.

5.2 ASSESSMENT SCHEDULE TIME FRAME

This booklet is designed to provide you with a time frame for your assessment tasks. It sets them out so that there will not be an overload of assessment tasks in any one period of time. If you have a problem with too many tasks scheduled at the one time, see your teachers immediately.

No tasks should be scheduled in the week immediately prior to major examinations. The only exception may be practical assessment tasks in some subjects - these will be scheduled in normal class time.

You should draw up your own DIARY of assessment tasks, including when you should be receiving notification.

In some cases it may be necessary to alter the Assessment Schedule. When this occurs, students MUST be notified in writing, 14 calendar days in advance.

In the event of a task not discriminating successfully between students, an additional (substitute) task may be set, provided students are given at least 14 calendar days' notice in writing.

5.3 NOTIFICATION OF ASSESSMENT TASKS

With the exception of the Half Yearly Examinations and Trial Examinations, students must be notified in writing of the ACTUAL date of all assessment tasks at least 14 calendar days before the task in the form of a handout or by email.

The due date and information for all Assessment Tasks will be given to you on a *Senior Assessment Task Notice/Cover Sheet* (see page 8 for an example), which will be issued when you are notified of the task.

Students will need to sign the registration form for this task held by their teacher.

5.4 ABSENCE WHEN A TASK IS NOTIFIED

Whenever you are absent from school, it is your responsibility to ensure that you know what work has been missed and to catch up on that work. The same conditions apply if you are absent when an Assessment Task is notified. You are not entitled to any automatic extension of time for the task. However, if you have a prolonged absence, you may submit TO THE PRINCIPAL an *Application for Consideration / Extension*

5.5 SUBMISSION OF TASKS

All tasks are to be submitted, with the *Senior Assessment Task Cover/Sheet* an example can be found on page 8, by the **START** of the first timetabled lesson in the relevant subject due on that day. If you are absent due to a **VALID** reason, you must email your assignment to the school at windsor-h.school@det.nsw.edu.au by 3.00pm on the due date. Ensure that you add the course and your teacher's name to the email.

All tasks submitted after this time will be deemed LATE.

You must sign the task registration sheet held by your teacher when submitting your task. If emailing your assignment add a request for 'received' email.

5.6 EXTENSIONS TO DUE DATES

An extension to the due date of an assignment may be approved, by the Assessment Review Panel, in cases of severe illness, prior knowledge of absence on due date or other exceptional circumstances. Approval for an extension **MUST** be sought well in advance of the due date. A medical certificate will be required in cases of illness.

For an extension you must complete an *Application for Consideration/Extension* (Green Form). This is available from the front office. You must return the completed form with attached evidence to the office. After consideration by the Assessment Review Panel, you will receive a ruling as to the outcome of your application.

If your extension is not granted, you must submit the incomplete task by the due date. Unless prior application for an extension has been approved, the late submission of a task will result in **ZERO** marks being awarded for that task, (see 5.13 below).

5.7 ABSENCE DUE TO ILLNESS/MISADVENTURE

It is **YOUR** responsibility to perform / submit all tasks which are a part of the Assessment Program. Assessment tasks must be submitted by the due date or performed in class at the specified time. If, because of a **VALID** reason, you cannot attend school on the day when an Assessment Task is to be done, you should telephone the school and either speak to your class teacher or let the School Office know your name and the reason for your absence. The assessment task or an outline of your task to be done must be emailed by the due date.

You must complete an *Application for Consideration / Extension* (Green Form) including parent/guardian signature and attach supporting documentation. The completed form must be emailed to the school or submitted to the front office within two school days of the due date of the task.

Absences due to illness **MUST** be supported with a medical certificate.

If your application is not successful, you will receive **ZERO** for that task.

In the case of a missed examination, the Assessment Review Panel may authorise that an estimate be given for the missed task that maintains your rank. However only one estimate for task is allowed per course.

School email address: windsor-h.school@det.nsw.edu.au

5.8 LATE SUBMISSION OF TASKS

All tasks are to be submitted, with the *Senior Assessment Task Notice/Cover Sheet* attached, at the **START** of the first timetabled lesson in the relevant subject on the due day. All tasks submitted after this time will be deemed **LATE**. If late and you have a valid reason, you must attach the *Application for Consideration/Extension* (Green Form) with supporting evidence to the front of your assignment and submit to your teacher. Students should ensure that they sign the registration form for the task held by the teacher or a received email receipt as proof that the assignment has been submitted. The *Application for Consideration/Extension* form will be

passed on to the Assessment Review Panel.

Unless the Assessment Review Panel receives, in writing, an acceptable explanation for the late submission of a task, the student will receive a ZERO for that task.

5.9 NON-ATTEMPT OF TASKS

When a student does not attempt a task:

- a **ZERO** mark will be awarded for the task
- the task will be recorded as a non-attempt
- parents/ guardians will be informed by letter and copies of the letter filed by the Course Head Teacher
- it may be necessary to invoke the '50% regulation' (see 5.11 below)

5.10 NON-GENUINE ATTEMPT OF TASKS

Students must make a genuine attempt at all Assessment Tasks. If, in the opinion of the class teacher, a student makes a non-genuine attempt at a task, it will not be marked and it will be treated in the same manner as a non-attempt of the task (see 5.9 above).

A non-genuine attempt is when a student submits an assessment task which shows little or no thought/effort, which is generally incomplete or which has been answered frivolously. A genuine attempt is the presentation of an assessment task which meets the requirements of the set task and which has been done to the best of the student's ability.

5.11 COMPLETION OF 50% OF TOTAL VALUE OF TASKS

Students studying an HSC course **MUST COMPLETE AND/OR MAKE A GENUINE ATTEMPT** at assessment tasks (including examinations) which contribute in excess of 50% of the total marks for the course. If this is not the case, the Principal must certify that the course has not been satisfactorily completed. This will result in the student not being awarded an assessment mark or an examination mark in that course and it may result in the non-award of an HSC. The Principal or Assessment Review panel will warn students (and their parents/guardians) in advance if they are in danger of not meeting the assessment requirements of the course.

5.12 MALPRACTICE IN ASSESSMENT TASKS

Where there is evidence of malpractice a penalty may be applied. The penalty will be determined, on a case by case basis, by the Assessment Review Panel.

Examples of malpractice in assessment tasks are:

- Not providing written recognition of any ideas that are used or adapted for your work.
- Pretending that you have written or created a piece of work that someone else originated.
- Allowing others to copy your work. Allowing others to copy your work makes you as guilty of plagiarism as the person doing the copying. You may face the same penalties.
- Disturbing examinations.
- Using unauthorised equipment or notes during an examination.

In such cases:

- the Assessment Review Panel will consider the penalty and inform the Principal and Head Teacher of the course
- parental guardians will be notified.
- It may be necessary to invoke the "50% Regulation" (see 5.11 above).

5.13 ZERO MARKS

ZERO is awarded to:

- a non-attempt at a task;
- a non-genuine attempt at a task;
- a task submitted late (without a **VALID** reason which must be approved by the Assessment Review

- Panel);
- it may be necessary to invoke the "50% Regulation" (see 5.11 above).

5.14 PARALLEL CLASSES

When there is more than one class in a particular course, common assessment tasks should be given.

5.15 STUDENTS WHO CHANGE COURSES/SCHOOLS/REPEAT

NESA will be notified as soon as possible of all HSC student movements both in and out of the school. For students who transfer between the commencement of assessments in a particular course and before June 30 in an HSC examination year, the receiving school is to prepare the final assessment based upon those tasks which the students complete at the receiving school. Any information from the student's previous school may also be taken into account. For students who transfer schools after June 30, their previous school is to provide the assessments. For students who transfer from interstate or overseas, only tasks undertaken at the receiving school should be assessed. For students who repeat Year 12, an assessment will be made for the repeated year only. No changes to the HSC entries will occur after June 30 in the HSC examination year, other than withdrawal from the course.

5.16 WARNINGS

If, at any time, it appears that a student is at risk of being found unsatisfactory in attendance, application or achievement of outcomes in any course, the Principal must:

- advise the student of the problem, in writing, allowing sufficient time for the problem to be corrected;
- advise the parent/guardian in writing;
- retain copies of relevant documentation-

5.17 CONFIDENTIALITY OF FINAL MARK

The final assessment mark for each course is confidential and may not be given to the students. Students may be given feedback as to their ongoing **ranking** in the course. Students may request their final ranking in the course after the completion of the HSC examination program in the school.

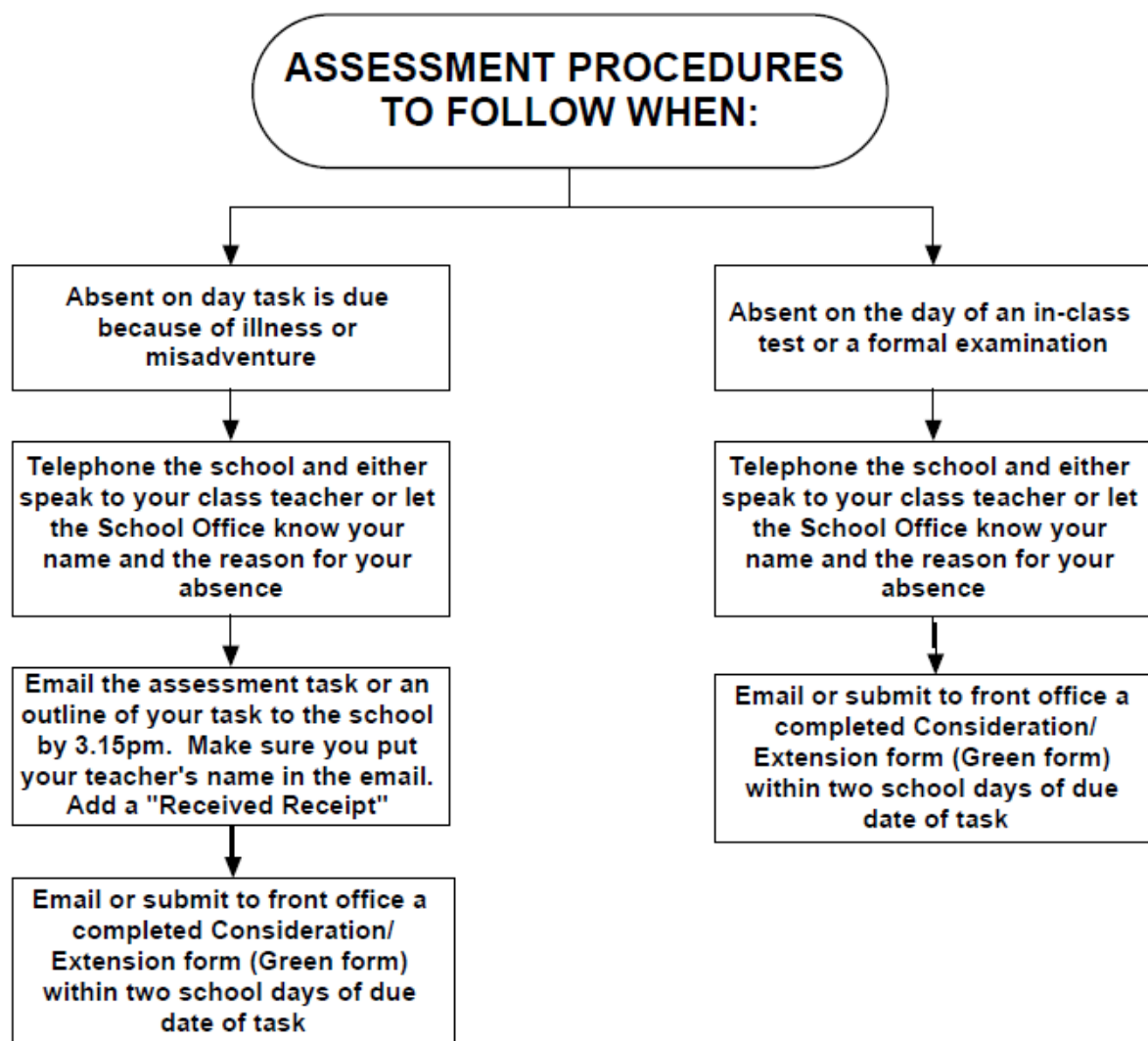
5.18 REVIEW OF ASSESSMENTS

If the ranking of a student is significantly different from his / her expectations, she / he may seek a review in that course.

A review committee consisting of the Principal (or nominee), the Senior School Coordinator and Head Teacher supervising the course, and one other teacher not involved in the assessment of the course will review:

- whether the weightings specified by the school in its assessment program conform with NESA's requirements as detailed in the subject guides;
- whether the procedures used by the school for determining the final assessment mark conform with its stated assessment program;
- whether a clerical or computational error had occurred.

A further appeal may be lodged through the Principal to NESA if the student is dissatisfied with the school review procedures. Marks awarded by teachers for individual assessment tasks are not subject to this appeal mechanism, and appeals will not be heard after the release of HSC results.



School Email Address: windsor-h.school@det.nsw.edu.au

The Consideration/Extension Form (Green Form) can be downloaded from the School's website
<http://www.windsor-h.schools.nsw.edu.au/>
or copied from page 9



WINDSOR HIGH SCHOOL

Consideration of Misadventure for Senior Assessment Task

WINDSOR
HIGH SCHOOL

This form is to be completed and submitted to the Assessment Review Panel via the Office if you wish to apply

- (i) for an extension of time on an assessment task/assignment, or
(ii) for special consideration because a task has not been submitted/done on the due date

STUDENT NAME: _____ YEAR _____ SUBJECT/COURSE: _____

ASSESSMENT TASK TITLE: _____

DATE TASK DUE: _____ TEACHER NAME: _____

ACTION REQUIRED
(circle one)

(i) extension of time until _____

OR

(ii) special consideration

REASON FOR APPLICATION:

MEDICAL CERTIFICATE ATTACHED: YES/NO/NOT APPLICABLE

STUDENT'S SIGNATURE: _____ DATE: _____

PARENT'S SIGNATURE: _____

ADDITIONAL COMMENTS sought by Panel:

✂-----✂

STUDENT'S RECEIPT OF APPLICATION FOR CONSIDERATION/EXTENSION ON SENIOR ASSESSMENT TASK

Reference Number: _____

STUDENT NAME: _____ SUBJECT/COURSE: _____

HEAD TEACHER: _____ CLASS TEACHER: _____



WINDSOR
HIGH SCHOOL

EXAMINATION RULES AND GUIDELINES

Year 12 Examinations

- ◆ Full school uniform is compulsory for all examinations.
- ◆ You must arrive at least 10 minutes before the advertised starting time of the examination. No extra time will be given for late comers. Not reading your timetable correctly will not be grounds for an appeal if you miss an examination. **Read your timetable carefully.**
- ◆ All assemblies and lessons will be suspended during the assessment days.
- ◆ You must bring all materials required for each examination in a clear pencil case or plastic sleeve. See your relevant teacher for equipment details. Borrowing equipment during the examination will not be allowed.
- ◆ Mobile phones, iPods and other electronic devices are not approved for use in examinations. They are to be turned off and kept in your bag. Having a mobile phone with you during the examination will be considered examination malpractice and if found with one you will be required to turn it off and hand it to the supervising teacher.
- ◆ Bags are to be left at the back of the hall upon entry.
- ◆ Watches must be removed and placed in clear view on your desk. Alarms must be silenced.
- ◆ You must complete an attendance slip for each examination.
- ◆ Writing is not allowed during the “Reading time” that is provided for your examination.
- ◆ Where an examination is 2 or more hours, you will be permitted to leave the examination after 1 hour but not in the last 15 minutes of the examination. If in an emergency, you have to leave and want to return and resume the examination, you must be supervised while you are absent from the examination room. For instance, if you need to go to the toilet, a teacher will accompany you and stand at the open main entrance to the toilet.
- ◆ Behaving in a manner that disturbs others or is contrary to the examination rules is considered examination malpractice. In this case you will be required to appear before the Assessment Review Panel to justify why you should not lose marks for your examination. If you are sent to the Deputy or the Principal, the school discipline policy will be enforced.
- ◆ Students are expected to maintain the highest standards of honesty during the examinations. Any attempt to communicate with other students, bring in notes or other study material, or any other form of cheating will result in severe disciplinary action which may include cancellation of all parts of the examination.
- ◆ If, because of a valid reason, you cannot attend an examination, you should telephone the school and let the School Office know your name and the reason for your absence. On the day you return to school, you must collect an *Application for Consideration / Extension* (Green Form) from the office or copy from your assessment book. This form must be completed including parent/guardian signature and supporting documentation attached. The completed form must be handed in to the office the next school day. Absences due to illness must be supported with a medical certificate.



WINDSOR
HIGH SCHOOL

Subject – Year 12
Assessment Task Title

Student Name:

Date Received:

Unit Title:

Date Due:

Weighting:

Total Mark:

Type of Task:

TASK CONTEXT:

TASK DESCRIPTION:

OUTCOMES TO BE ASSESSED:

- Outcome
- Outcome
- Outcome (2-4 Outcomes per task)

SUCCESS CRITERIA:

- ☐
- ☐
- ☐
- ☐
- ☐
- ☐
- ☐
- ☐

COMPLETION PROCESS: (please indicate what you have done)

- ☐ Did you participate in the explanation lesson?
- ☐ Have you caught up on any missed classwork?
- ☐ Did you complete all classwork this term?
- ☐ Have you reviewed the appropriation and SCAMPER notes taken in class?
- ☐ Have you read examples of Children's Literary Canon from the list provided by the teacher?
- ☐ Did you select one that you would like to appropriate?
- ☐ Have you organised access to a computer?
- ☐ Have you drafted your response?
- ☐ Have you checked spelling, punctuation and grammar?
- ☐ Have you approached the teacher for feedback on your draft?
- ☐ Have you made suggested edits?
- ☐ Have you organised printing of the task? (or other submission details)

If you are still feeling unsure of what you need to do:

- ☐ Have you discussed it with a trusted classmate?
- ☐ Have you spoken to your teacher?
- ☐ Have you spoken to the Head Teacher?
- ☐ Have you spoken to the teachers in the Learning Hub?

DRAFTING YOUR WORK

Drafts can be submitted to your teacher Monday to Friday with the expectation that they will be viewed between the hours of 8:30am and 3:30pm.

You can submit a maximum of **two** drafts for feedback no later than Date (48 hrs before due).

MISADVENTURE/ABSENCE ON DUE DATE

If you know you **will not** be in your normal time-tabled class on **the day the task is due** you must see your teacher **BEFORE** the due date. Involvement in sport, work placement or extra-curricular activities must be negotiated **BEFORE** the task is due or zero marks will be awarded.

If you are **ABSENT** on the day the task is due, you will be required to complete the task during the next timetabled lesson for which you are present **OR** you will be required to email the task to windsor-h.school@det.nsw.edu.au with Attn: Class Teacher **OR** Google Classroom Code: 123XYZ.

Please remember that assessment marks contribute directly to your final result and make every effort to do your best with this task.

DECLARATION

I declare, when I sign for this submission, that it is **all my own work** and, to the best of my knowledge and belief, it contains no material including images, previously published, exhibited, or written by another person or myself, except where due acknowledgment is made.

- I have made and **retained a copy** of this original assignment
- I am aware **a zero mark** will be awarded for late submission of this task unless a misadventure form accompanied by a doctor's certificate is submitted to and approved by the Assessment Review Panel
- I am aware that submitting a task 10% above the word limit or time limit will result in markers ceasing to evaluate the task beyond this point.

Year 12 Assessment Calendar – 2020

	2019 TERM 4	2020 TERM 1	2020 TERM 2	2020 TERM 3
1				
2			Timber Tech SDD	CAFS Primary Industries
3			PD/H/PE Primary Industries	
4	PD/H/PE		Society & Culture Visual Arts	Trial HSC
5		CAFS Timber Tech Hospitality	Stand Maths 1 Stand Maths 2 CAFS	Trial HSC Work Studies (no exam)
6	Timber Tech		Modern History Entertainment	
7	Biology Work Studies CAFS SLR Visual Arts Entertainment	English Studies Legal Studies Visual Arts	Biology Work Studies	
8	Advanced English English Standard Modern History CAFS LS SDD Metals Primary Industries	Advanced English English Standard Stand Maths 1 Stand Maths 2 Biology EES Work Studies CAFS LS PD/H/PE SDD Entertainment Metals	English Studies Society & Culture LS CAFS LS Music 1 Metals	Primary Industries
9	English Studies Stand Maths 1 Stand Maths 2 EES Business Studies Legal Studies Drama Music 1 Engineering Studies Hospitality	Modern History Society & Culture Society & Culture LS SLR Drama Music 1 Engineering Studies	Ad Mathematics EES Business Studies Legal Studies SLR Drama Engineering Studies	
10	Ad Mathematics Society & Culture Society & Culture LS	Ad Mathematics Business Studies	Advanced English English Standard Entertainment Spec. Hospitality1144	
11				

HSC English Advanced

Task Number	Task 1	Task 2	Task 3	Task 4	
Timing	Multimodal Presentation Common Module <i>Texts and Human Experiences</i>	Critical Module A <i>Textual Conversations</i> <i>Craft of Writing (10%)</i>	Critical/ Reflection Module B <i>Critical Study of Literature</i> <i>Craft of Writing (10%)</i>	Trial HSC Exam Common Module Module A Module B <i>Craft of Writing (5%)</i>	
	Term 4, Week 8	Term 1, Week 8	Term 2, Week 10	Term 3, Week 4/5	
Outcomes Assessed	EN12-1 EN21-3 EN12-5 EN12-6 EN12-7	EN12-1 EN12-3 EN12-4 EN12-5 EN12-7EN12-8 EN12-9	EN12-1EN12-3 EN12-4EN12-5 EN12-9	EN12-1EN12-3 EN12-4EN12-5 EN12-6EN12-7 EN12-8	
Components					Weightings %
Knowledge and understanding of course content	10	15	15	10	50
Skills in responding to texts and communication of ideas appropriate to audience, purpose and context across all modes	10	15	15	10	50
Total %	20	30	30	20	100

HSC English Standard

Task Number	Task 1	Task 2	Task 3	Task 4	
Timing	Multimodal Presentation Common Module <i>Texts and Human Experiences</i>	Analytical Module A <i>Language, Identity and Culture</i> <i>Craft of Writing (10%)</i>	Analytical/ Reflection Module B <i>Close Study of Literature</i> <i>Craft of Writing (10%)</i>	Trial HSC Exam Common Module Module A Module B <i>Craft of Writing (5%)</i>	
	Term 4, Week 8	Term 1, Week 8	Term 2, Week 10	Term 3, Week 4/5	
Outcomes Assessed	EN12-1 EN21-3 EN12-5 EN12-6 EN12-7	EN12-1 EN12-3 EN12-4 EN12-5 EN12-7EN12-8 EN12-9	EN12-1EN12-3 EN12-4EN12-5 EN12-9	EN12-1EN12-3 EN12-4EN12-5 EN12-6EN12-7 EN12-8	
Components					Weightings %
Knowledge and understanding of course content	10	15	15	10	50
Skills in responding to texts and communication of ideas appropriate to audience, purpose and context across all modes	10	15	15	10	50
Total %	20	30	30	20	100

HSC English Studies

Component	Task 1	Task 2	Task 3	Task 4	Weighting
	Texts and Human Experiences: Multimodal presentation	We are Australians: Research Task	Part of a Family: English and Family Life Creative	Trial HSC Examination	
	Term 4, Week 9	Term 1, Week 7	Term 2, Week 8	Term 3 Week 4/5	
	H1.4, H2.1, H2.3, H3.2, H4.1, H4.2	ES12-3, ES12-5, ES12-7, ES12-8, ES12-9	ES12-2, ES12-4, ES12-6, ES12-8	ES12-2, ES12-3, ES12-4, ES12-5, ES12-9	
Components					Weightings %
Knowledge and understanding of course content	15	10	15	10	50
Skills in responding to texts and communication of ideas appropriate to audience, purpose and context across all modes	10	15	15	10	50
Marks	20	25	30	25	100

HSC Advanced Mathematics

Component	Task 1	Task 2	Task 3	Task 4	Weighting %
	Assignment/ investigation Topics: T3	Class test Topics: F2, C2, C3	Assignment/ modelling and problem-solving task Topic: S2, S3	Trial HSC examination Topics: F2, T3, C2, C3, C4, M1, S2, S3	
	Term 4, Week 10	Term 1, Week 10	Term 2, Week 9	Term 3, Week 4-5	
	Outcome(s) assessed MA12-1 MA12-5 MA12-9 MA12-10	Outcome(s) assessed MA12-1 MA12-3 MA12-6 MA12-7	Outcome(s) assessed MA12-8 MA12-9 MA12-10	Outcome(s) assessed MA12-1 MA12-2 MA12-3 MA12-4 MA12-5 MA12-6 MA12-7 MA12-8 MA12-9 MA12-10	
Understanding, Fluency and Communicating	12	13	10	15	50
Problem Solving, Reasoning and Justification	13	12	10	15	50
Total %	25	25	20	30	100

HSC Standard Mathematics 1

Components	Task 1	Task 2	Task 3	Task 4	Weighting %
	Practical Task Topics M3	Assignment/ investigation Topics S3	In-class test Topics A3, N1	Final Examination Topics A3, M3,M4,M5,F2,S3,N1	
	Term 4, Week 9	Term 1, Week 8	Term 2, Week 5	Term 3, Weeks 4–5	
	Outcomes assessed MS11-2 MS11-5 MS11-6 MS1-12-3 MS1-12-4 MS1-12-9 MS1-12-10 MALS6-3 MALS6-4 MALS6-13 MALS6-14	Outcomes assessed MS1-12-2 MS1-12-5 MS1-12-7 MS1-12-9 MS1-12-10 MALS6-2 MALS6-7 MALS6-8 MALS^13 MALS6-14	Outcomes assessed MS1-12-1 MALS6-11 MS1-12-2 MALS6-12 MS1-12-3 MALS6-13 MS1-12-4 MALS6-14 MS1-12-6 MALS6-1 MS1-12-7 MALS6-7 MS1-12-9 MALS6-8 MS1-12-10 MALS6-13 MALS6-14	Outcomes assessed MS1-12-1 to MS1-12-10 MALS6-1 to MALS6-14	
Understanding, Fluency and Communicating	10	15	10	15	50
Problem Solving, Reasoning and Justification	10	15	10	15	50
Total %	20	30	20	30	100

HSC Standard Mathematics 2

Components	Task 1	Task 2	Task 3	Task 4	Weighting %
	Practical Assignment	Investigation Assignment	In-class Test	Trial HSC Examination	
	Topics M6	Topics S4, S5	Topics N2, N3	Topics A4, M6, M7, F4, S4, S5, N2, N3	
	Term 4, Week 9	Term 1, Week 8	Term 2, Week 5	Term 3, Weeks 4–5	
	Outcomes assessed MS2-12-3 MS2-12-4 MS2-12-9 MS2-12-10 MALS6-3, MALS6-4, MALS6-13, MALS6-14	Outcomes assessed MS2-12-2 MS2-12-7 MS2-12-9 MS2-12-10 MALS6-2, MALS6-9, MALS6-13, MALS6-14	Outcomes assessed MS2-12-8 MS2-12-9 MS2-12-10 MALS6-11, MALS6-12, MALS6-13, MALS6-14	Outcomes assessed MS2-12-1 to MS2- 12-10 MALS6-1 to MALS6-14	
Understanding, Fluency and Communicating	10	15	10	15	50
Problem Solving, Reasoning and Justification	10	15	10	15	50
Total %	20	30	20	30	100

HSC Biology

Component	Task 1	Task 2	Task 3	Task 4	Weighting
	Plan and perform a Practical Task	Skills Examination	Secondary Source Research – Epidemiology Study	Trial HSC Examination	
	Term 4 Week 7	Term 1 Week 8	Term 2 Week 7	Term 3 Week 4/5	
	H11, H12, H13, H14, H15	H1, H5, H12, H13, H14	H2, H9, H11, H12, H13, H14	H3, H4, H6, H7, H8, H9, H10, H13, H14	
Knowledge and understanding of; <ul style="list-style-type: none"> The history, nature and practice of biology, applications and uses of biology and their implications for society and the environment, and current issues, research and development in biology Cell ultrastructure and processes, biological diversity, environmental interactions, mechanisms of inheritance and biological evolution 	5		15	20	40
Skills in: <ul style="list-style-type: none"> Planning and conducting first-hand investigations Gathering and processing first-hand data Gathering and processing relevant information from secondary sources. 	10	10	10		30
Skills in: <ul style="list-style-type: none"> Communicating information and understanding Developing scientific thinking and problem-solving techniques Working individually and in teams 	5	10	5	10	30
Marks	20	20	30	30	100

HSC Earth and Environmental Science

Informal Assessment

- Homework
- First-hand Practical Investigations
- Secondary Source Investigations

Formal Assessment

Component	Task 1	Task 2	Task 3	Task 4	Weighting
	Data Analysis task	Depth Study- Hazards Secondary source research task	Waste management audit- First hand investigation	Trial HSC examination	
	Week 9 Term 4	Week 8 Term 1	Week 9 Term 2	Week 4-5 Term 3	
	EES12-1, EES12-4, EES12-6, EES12-12,	EES12-4, EES12-5, EES12-6, EES12-7, EES12-13	EES12-1, EES12-2, EES12-3, EES-4, EES15	EES12-1, EES12-2, EES12-3, EES12-4, EES12-5, EES12-6, EES12-7, EES12-12, EES12-13, EES12-14, EES12-15	
Knowledge and understanding in: <ul style="list-style-type: none"> • Knowledge and understanding of the evolving Earth • develop knowledge and understanding of the impacts of living on the Earth 	-	10	10	20	40
Working Scientifically Skills in: <ul style="list-style-type: none"> • Planning Investigation • Conducting Investigations • Processing Data and Information • Analysing Data and Information 	15	5	10	0	30
Working Scientifically Skills in: <ul style="list-style-type: none"> • Communicating • Questioning and Predicting • Problem Solving 	5	5	10	10	30
Marks	20	20	30	30	100

HSC Business Studies

Informal Assessment:

- Course/classwork
- Practice Exams
- Homework Tasks

Formal Assessments:

Component	Task 1	Task 2	Task 3	Task 4	Weighting
	Topic test: Operations	Marketing plan analysis	Financial statement analysis	Trial HSC exam	
	Term 4 Week 9 Friday	Term 1 Week 10 Tuesday	Term 2 Week 9 Tuesday	Term 3 Week 4/5	
	H2, H4, H5, H9	H4, H6, H7, H8, H9	H5, H8, H9, H10	H1, H2, H3, H4, H5, H6, H8, H9, H10	
Knowledge and understanding of course content	5	10	10	15	40
Stimulus-based skills	10			10	20
Inquiry and research		10	10		20
Communication of business information, ideas and issues in appropriate forms	5	5	5	5	20
Marks	20	25	25	30	100

HSC Legal Studies

Informal Assessment:

- Course/classwork
- Practice Exams
- Homework Tasks

Formal Assessments:

Component	Task 1	Task 2	Task 3	Task 4	Weighting
	Crime Topic Test	Human Rights Research/Report /Oral	Family Research/Report	Trial Examination	
	Term 4 Week 9	Term 1 Week 7	Term 2 Week 9	Term 3 Week 4/5	
	H1, H2, H3, H4, H6, H7, H9	H3, H4, H7, H8, H9	H1, H2, H3, H5, H6, H7, H8, H9, H10	H1, H2, H3, H4, H6, H7, H9, H10	
Knowledge and understanding of content	15	10	10	25	60
Research		10	10		20
Communication	5	5	5	5	20
Marks	20	25	25	30	100

HSC Modern History

Informal Assessment:

- Course/classwork/homework
- Practice Exams
- PIP Progress work

Component	Task 1	Task 2	Task 3	Task 4	Weighting %
	Historical analysis Power and Authority in the Modern World 1919–1946	Research Task National Studies	Oral presentation Peace and Conflict	Trial HSC Examination	
	Term 4, Week 8	Term 1, Week 9	Term 2, Week 6	Term 3, Week 4	
	Outcomes assessed MH12-3 MH12-4 MH12- 6 MH12-7 MH12-9	Outcomes assessed MH12-2 MH12-3 MH12-4 MH12-5 MH12-8 MH12-9	Outcomes assessed MH12-2 MH12-5 MH12-7 MH12-8	Outcomes assessed MH12-3 MH12-4 MH12-5 MH12-7 MH12-9	
Knowledge and understanding of course content	5	10	10	15	40
Historical skills in the analysis and evaluation of sources and interpretations		5	5	10	20
Historical inquiry and research	10	5	5		20
Communication of historical understanding in appropriate forms	5	5	5	5	20
Total %	20	25	25	30	100

HSC Society & Culture

Informal Assessment:

- Course/classwork/homework
- Practice Exams
- PIP Progress work

Formal Assessments:

Component	Task 1	Task 2	Task 3	Task 4	Weighting
	Research Report: Gender Crisis in India	Conformity & Non-Conformity Report	Oral Presentation P.I.P - Process	Trial HSC Exam	
	Term 4, Week 10	Term 1, Week 9	Term 2, Week 4	Term 3 Week 4/5	
	H6, H7, H8, H9, H10	H1, H2, H5, H7, H10	H6, H7, H8, H9	H1, H2, H3, H4, H5, H6, H9, H10	
Knowledge and understanding of content	15	15		20	50
Application and evaluation of social and cultural research methodologies		5	20	5	30
Communication of information, ideas and issues in appropriate forms	10	5		5	20
Marks	25	25	20	30	100

HSC Society & Culture - LIFESKILLS

Informal Assessment:

- Coursework

Formal Assessments:

Component	Task 1	Task 2	Task 3	Weighting
	Gender Crisis in India Table	Non-Conformist Groups: Bra Boys Report	"Social Issue" Project	
	Term 4, Week 10	Term 1, Week 9	Term 2, Week 8	
	SCLS5, SCLS6, SCLS7, SCLS8	SCLS1, SCLS3, SCLS4, SCLS6	SCLS9, SCLS8	
Knowledge and understanding of content	20	20	10	50
Application and evaluation of social and cultural research methodologies		5	25	30
Communication of information, ideas and issues in appropriate forms	5	5	10	20
Marks	30	30	40	100

HSC Work Studies Course B Assessment Schedule

Component	Task 1	Task 2	Task 3	Task 4	Weighting
	Resume and Cover Letter	Communication Website	Creating and Managing a Budget: Personal Finance	Interview and Report* (First Year Students) or Team Enterprise Project** (Second Year Students)	
	Term 4 Week 7	Term 1 Week 8	Term 2 Week 7	Term 3 Week 5	
	1, 2, 3, 4, 5, & 6	1, 2, 5, 6, 7 & 9	4, 5, 7, 8 & 9	1, 3, 4 & 5* 2, 5, 6, 7, 8 & 9**	
Knowledge and understanding	10	10	10	10	40
Skills	15	15	15	15	60
Marks	25	25	25	25	100

HSC Community and Family Studies

Informal Assessment:

- Coursework/classwork/homework
- Practice examination questions
- IRP progress work

Formal Assessments:

Component	Task 1	Task 2	Task 3	Task 4	Weighting
	Research Methodology: Independent Research Project	Individuals and Work Case Study	Groups in Context: Information Booklet	Trial HSC	
	Project Plan 5 marks Term 4 Week 7 2019 Project Diary 10 marks Term 1 Week 5 2020 Product 15 marks Term 1 Week 5 2020	Term: 2 Week: 5 2020	Term: 3 Week: 2 2020	Term: 3 Week: 4/5 2020	
	H4.1, H4.2	H2.2, H3.4, H5.2	H1.1, H2.2, H3.1, H3.3, H4.2, H5.1, H6.2	H1.1, H2.1, H2.2, H2.3, H3.2, H3.3, H3.4, H5.1, H5.2, H6.1, H6.2	
Knowledge and understanding of course content	10	10	10	10	40
Skills in critical thinking, research methodology, analysing and communicating	10	15	15	20	60
Marks	20	25	25	30	100

HSC Community and Family Studies Life Skills

Informal Assessment:

- Coursework
- Oral Reports
- Journal Writing

Formal Assessments:

Component	Task 1	Task 2	Task 3	Weighting
	Module 4: Specific Groups in Society Term 4 Week 8 2019	Module 5: Transition to Adulthood Term 1 Week 8 2020	Module 6: Participating in Work and Community Environments Term 2 Week 8 2020	
	Observation and Report – 35%	Moving out of Home – 30%	Work Experience Report – 35%	
	4.1, 4.2, 4.3, 7.1.	5.1, 5.2, 5.3, 5.4, 5.5, 7.1.	6.1, 6.2, 6.3, 6.4, 7.1.	
Knowledge and understanding of course content	15	10	15	40
Skills in research processes, responsibilities of adulthood and participating as productive member of society.	20	20	20	60
Marks	35	30	35	100

HSC Personal Development, Health and Physical Education

Informal Assessment

- Course/classwork
- Practice examination questions
- Homework

Formal Assessment

Component	Task 1	Task 2	Task 3	Task 4	Weighting
	Core 1 Health Priorities Research Report	Core 2 Factors Affecting Performance Case Study and Research	Option 3 Sports Medicine Practical Demonstration and Short Answer Response	Trial HSC	
	Term 1 Week 4 2020	Term 2 Week 8 2020	Term 3 Week 3 2020	Term 3 Week 5 2019	
	H1, H2, H5, H14, H15	H7 – H10, H16, H17	H8, H13, H17	H1-H5 H7-H11 H13-H17	
Knowledge and understanding of	10	10	10	10	40
Skills in critical thinking, research, analysis and communication	15	15	10	20	60
Marks	25	25	20	30	100

HSC / Preliminary Sport, Lifestyle and Recreation

Informal Assessment

- Coursework/classwork/homework
- Practical Participation

Formal Assessment

Component	Task 1	Task 2	Task 3	Task 4	Weighting
	First Aid and Sports Injuries Theory/Practical Scenarios and Quiz	Sports Coaching Theory/Practical Presentation	Fitness Program Design	Trial HSC	
	Term 4 2019 Week 7	Term 1 2020 Week 9	Term 2 2020 Week 9	Term 3 2020 Week 4/5	
	1.3, 2.5, 3.6, 4.2, 4.5, 5.1	1.1, 1.3, 2.1, 3.1, 3.2, 4.2, 4.5.	1.3, 2.2, 3.2, 3.3.	1.1, 1.3, 2.1, 2.2, 2.3, 2.5, 3.1, 3.2, 3.3.	
Knowledge and understanding	15	10	10	15	50
Skills	10	15	15	10	50
Marks	25	25	25	25	100

HSC Drama

Informal Assessment:

- Course/classwork/homework
- Practice Exams
- Rehearsals

Component	Task 1	Task 2	Task 3	Task 4	Weighting
	Australian Drama: Performance Essay	Individual Project: Submission OR Performance of Work Under Development	Group Performance Work in Progress	Trial HSC Examination	
	Term 4 Week 9	Term 1 Week 9	Term 2 Week 9	Term 3 Week 4/5	
	H1.3, H1.6, H3.1, H3.2, H3.3	*	H1.1, H1.2, H1.4, H1.5, H2.2	H3.1, H3.2, H3.3, H1.4, H1.5, H2.1, H2.2, H2.3	
Making	10	10	10	10	40
Performing			20	10	30
Critically Studying	10	10		10	30
Total %	20	20	30	30	100

* Teacher will select the appropriate outcomes based on the Individual Project OPTION selected by each student (Performance, Set Design, Costume Design, Scriptwriting etc.).

HSC Music 1

Component	Task 1	Task 2	Task 3	Task 4	Weighting
	Topic 1 Instrument and its Repertoire	Topic 2 Music for Small ensemble	Topic 3 Student Choice based on Elective focus	Trial HSC Examination Aural Skills Examination	
	Performance and Viva Voce	Performance and Aural Examination	Composition Core Elective 1	Responses to aural excerpts. Elective Performances Outcomes assessed	
	Term 4 Week 9	Term 1 Week 9	Term 2 Week 8	Term 3 Week 4/5	
	Outcomes assessed H1, H2, H4, H5	Outcomes assessed H4, H6, H8, H9	Outcomes assessed H3, H7, H8, H9	Outcomes assessed H1, H4, H6, H8, H9	
Performance Core	5	5			10
Composition Core			10		10
Musicology Core	10				10
Aural Core		15		10	25
Elective 1			15		15
Elective 2				15	15
Elective 3				15	15
Marks	15	15	25	40	100

HSC Visual Arts

Component	Task 1	Task 2	Task 3	Task 4	Weighting
	Initiation of the HSC Body of Work: VAPD documentation – Identification of a concept and investigation of artmaking practices e.g . documented experiments with materials, written evaluations and explanations of intentions. Research about the material or conceptual practice of a related artist.	Case Study Research: Investigation of a particular theme in the Visual Arts that relates aspects of critical and historical investigations and takes into account the inter relationship of practice, the conceptual framework and the frames.	Trial HSC Examination: Art criticism and Art history.	Development, completion and resolution of the Body of Work: VAPD - ongoing documentation of experiments with materials, written reflections and explanations of intentions / processes. The development of Conceptual strength & meaning and Material resolution. Submission of completed Body of Work and VAPD	
	Term 4, Week 7 28/11/2019	Term 2, Week 7	Term 3, Week 4 *TBC	Term 3, Week 5	
	H1, H2, H3, H4, H5, H6,	H7, H8, H9, H10.	H7, H8, H9, H10.	H1, H2, H3, H4, H5, H6.	
Artmaking	25			25	50
Art Criticism and Art history		20	30		50
Marks	25	20	30	25	100

HSC Engineering Studies

Task Number	Task 1	Task 2	Task 3	Task 4	
Task Title	Civil Structure Report	Personal & Public Transport Report + Model	Aeronautical Engineering Report	Trial HSC Examinations	
Timing	Week 9, T 4, 2019	Week 9, T 1	Week 9, T 2	Week 4/5, T 3	
Outcomes assessed	H1.2, H2.1, H3.2, H3.3, H4.1, H4.2 & H5.2	H1.2, H2.1, H4.1, H4.2, H4.3 & H6.1	H4.3, H5.1, H5.2 & H6.1	H2.2, H3.1, H6.1 & H6.2	
Component					Weighting%
Knowledge and understanding of course content	15	15	15	15	60
Knowledge and skills in research, problem solving and communication related to engineering practice	10	10	10	10	40
Total %	25	25	25	25	100

HSC Industrial Technology Timber

Component	Task 1	Task 2	Task 3	Task 4	Weighting
	Presentation of Major Project Ideas and Development	Progress on portfolio for major work	Progress on major work	Trial HSC (Written examination)	
	Term 4, Week 6	Term 1, Week 5	Term 2, Week 2	Term 3, Week 4/5	
	H1.1, H1.2,	H5.1, H5.2, H7.1,	H2.1, H3.3, H4.1, H6.2	H1.1, H1.2, H1.3, H3.1, H4.3, H6.1, H7.1, H7.2	
Knowledge and understanding of the organisation and management of, and manufacturing processes and techniques used by, the focus area industry		10	10	20	40
Knowledge, skills and understanding in designing, managing, problem-solving, communicating and the safe use of manufacturing processes and techniques through the design and production of a quality major project	20	10	20	10	60
Marks	20	20	30	30	100

HSC Software Design and Development

Task number	Task 1	Task 2	Task 3	Task 4	
Nature of tasks	Topic Test: The interrelationship between software & hardware	Social Issues Case Study	Project	Trial HSC Examination	
Timing	Term 4, Week 8	Term 1, Week 8	Term 3, Week 2	Term 3, Weeks 4-5	
Outcomes assessed	H1.1, H1.3, H2.2, H4.1, H5.1, H5.2	H1.2, H3.1,	H3.2, H4.2, H4.3, H5.1, H5.2, H5.3, H6.3	H1.2, H1.3, H3.1, H5.2, H6.1, H6.4	
Component		Weighting %			
Knowledge and understanding of course content	10	10	10	20	50
Knowledge and skills in the design and development of software solutions	10	10	20	10	50
Total %	20	20	30	30	100

VOCATIONAL EDUCATION AND TRAINING ASSESSMENT POLICY FOR SENIOR COURSES

All Vocational Education and Training (VET) Courses have specific industry related competencies which will be assessed in a variety of tasks continuously throughout the course. Notice of the tasks will be given to students throughout the course. Students will need to demonstrate competency within the set tasks in order to attain the Australian Qualification Framework (AQF) national qualification of Certificate II or III depending on the course.

Satisfactory participation in the set tasks will qualify students for the award of a Preliminary Certificate or a HSC qualification within the guidelines set out by the NSW NESA.

Students can also choose to attain an Australian Tertiary Admission Rank (ATAR). Students wishing to gain an ATAR qualification will need to complete a number of school assessments and exams as well as an external HSC examination set by NESA. The marks from the school's examinations will be used to generate the student's HSC estimated mark. NESA will use the estimated mark only in the case of misadventure, otherwise a student's examination mark in the external HSC examination will be used to determine their ATAR.

The following VET courses will be assessed as above:-

Entertainment
Hospitality
Metals and Engineering
Primary Industries

The Assessment Schedules that follow are for the HSC accreditation, satisfactory competency completion will give the student a vocational qualification.

Student Competency Assessment Schedule

Course: HSC - Entertainment Industry

2020

Assessment Tasks for CUA30415 Statement of Attainment towards Certificate III in Live Production and Services		Cluster E	Cluster F	Cluster G	Work placement	Trial HSC Exam
		On the Stage	Vision Systems	Customer is always right		
		Week: 7/8 Term: 4 2019	Week: 8 Term: 4	Week: 6 Term: 4	Week: TBA Term: 1	Week: 4/5 Term: 3
Code	Unit of Competency				HSC Exam inable Units of Competency	HSC Exam inable Units of Competency
CUASTA301	Assist with production operations for live performances	X				
CUASMT301	Work effectively backstage during performances	X				
MEM18002B	Use power tools/hand held operations	X				
CUAVSS302	Operate vision systems		X			
SITXCCS303	Provide service to customers			X		

Depending on the achievement of units of competency, the possible qualification outcome is a Statement of Attainment towards Certificate III in Live Production and Services CUA30415

Schools will schedule exam items in preparation for the HSC. These do not form part of the RTO assessment requirements.

The assessment components in this course are competency based. This means that students need to demonstrate that they have gained and can apply the specific knowledge and skills of each unit of competency. Competency assessment is graded as "not yet competent" or "competent". In some cases other descriptive words may be used leading up to "competent". This means a course mark is not allocated.

Student Competency Assessment Schedule

COURSE: Entertainment Industry

2020

Specialisation - 60 Hour Curriculum Delivery

Assessment Task for Certificate III in Live Production and Services CUA30415		Cluster H
		Week: 10 Term: 2
Code	Unit of Competency	
CUAPRP304	Participate in collaborative creative projects	X
BSBWOR301	Organise personal work priorities and development	X
CUALGT304	Install and operate follow spots	X

Depending on the achievement of units of competency, the possible qualification outcome is Certificate III in Live Production and Services CUA30415 or a Statement of Attainment towards Certificate III in Live Production and Services CUA30415.

This Specialisation course can only be delivered concurrently with the 240 Hour Entertainment Industry course.

The assessment components in this course are competency based. This means that students need to demonstrate that they have gained and can apply the specific knowledge and skills of each unit of competency. Competency assessment is graded as "not yet competent" or "competent". In some cases other descriptive words may be used leading up to "competent". A course mark is not allocated.

Assessment Tasks for Certificate II Kitchen Operations SIT20416		Cluster D	Cluster E	Cluster F	Work placement	Trial HSC Exam
		Food Glorious Food	Working in Industry	Cooking in the Commercial Kitchen		
		Week: 9 Term: 4	Week: 5 Term: 1	Week: 10 Term: 2		
Code	Unit of Competency					HSC Examinable Units of Competency
SITHCCC003	Prepare and present sandwiches	X				
SITHCCC006	Prepare appetisers and salads	X				
BSBWOR203	Work effectively with others		X			
SITHIND002	Source and use information on the hospitality industry		X			
BSBSUS201	Participate in environmentally sustainable work practices		X			
SITHCCC005	Prepare dishes using basic methods of cookery			X		
SITHCCC011	Use cookery skills effectively			X		

Depending on the achievement of units of competency, the possible qualification outcome is a Statement of Attainment towards Certificate II in Kitchen Operations SIT20416 or a Certificate II in Kitchen Operations SIT20416.

Schools may schedule exam items in preparation for the HSC. These do not form part of the RTO assessment requirements.

The assessment components in this course are competency based. This means that students need to demonstrate that they have gained and can apply the specific knowledge and skills of each unit of competency. Competency assessment is graded as "not yet competent" or "competent". In some cases other descriptive words may be used leading up to "competent". A course mark is not allocated.

COURSE: HSC – Metal and Engineering
2020

Assessment Tasks for Certificate I Engineering MEM10105		Cluster D	Cluster E	Cluster F	Half yearly Exam	Trial Exam
		Hacksaw	Manual Handling/Bench Vice	Computers and drawing		
		Week: 8 Term: 4	Week: 8 Term: 1	Week: 8 Term: 2		
Code	Unit of Competency				HSC Examinable Units of Competency	HSC Examinable Units of Competency
MEM05006C	Perform brazing and or silver soldering	X				
MEM16005A	Operate as a team member to conduct manufacturing, engineering or related activities	X				
MEM16007A	Work with others in a manufacturing, engineering or related environment	X				
MEM11011B	Undertake manual handling		X			
MEM07032B	Use workshop machines for basic operations		X			
MEM16008A	Interact with computing technology			X		
Not Assessed for RTO	Interpret technical drawing			HSC Content only		

Depending on the achievement of units of competency, the possible qualification outcome is Certificate I in Engineering MEM10105 or a Statement of Attainment towards Certificate I in Engineering MEM10105

Schools will schedule exam items in preparation for the HSC. These do not form part of the RTO assessment requirements.

The assessment components in this course are competency based. This means that students need to demonstrate that they have gained and can apply the specific knowledge and skills of each unit of competency. Competency assessment is graded as "not yet competent" or "competent". In some cases other descriptive words may be used leading up to "competent". A course mark is not allocated.

Assessment Tasks for Certificate II in Agriculture AHC20116		Cluster D	Cluster E	Cluster F	Cluster G	Yearly Exam
		Chemicals and weeds	Work effectively in the industry	Fencing, weather and communication	Growing plants	
		Week 8 Term 1	Week 3 Term 2	Week 2 Term 3	Week 8 Term 3	Week 4/5 Term 3
Code	Unit of Competency					
AHCCHM201	Apply chemicals under supervision	X				HSC Examinable Units of Competency
AHCPMG201	Treat weeds	X				
AHCWRK209	Participate in environmentally sustainable work practices		X			
AHCWRK204	Work effectively in the industry		X			
AHCWRK201	Observe and report on weather			X		
AHCINF202	Install, maintain and repair farm fencing			X		
AHCWRK205	Participate in workplace communications			X		
Plant option	Please check boxes selected					
AHCNSY201	Pot up plants				<input checked="" type="checkbox"/>	
AHCNSY203	Undertake propagation activities				<input checked="" type="checkbox"/>	

Depending on the achievement of units of competency, the possible qualification outcome is a Certificate II in Agriculture AHC20116 or a Statement of Attainment towards a Certificate II in Agriculture AHC20116.

Schools may schedule exam items in preparation for the HSC. These do not form part of the RTO assessment requirements.

The assessment components in this course are competency based. This means that students need to demonstrate that they have gained and can apply the specific knowledge and skills of each unit of competency. Competency assessment is graded as "not yet competent" or "competent". In some cases other descriptive words may be used leading up to "competent". A course mark is not allocated.