



NSW Education Standards Authority

2019 HIGHER SCHOOL CERTIFICATE EXAMINATION

Community and Family Studies

General Instructions

- Reading time – 5 minutes
- Working time – 3 hours
- Write using black pen

Total marks:
100

Section I – 75 marks (pages 2–24)

This section has two parts, Part A and Part B

Part A – 20 marks

- Attempt Questions 1–20
- Allow about 35 minutes for this part

Part B – 55 marks

- Attempt Questions 21–29
- Allow about 1 hour and 40 minutes for this part

Section II – 25 marks (pages 25–26)

- Attempt ONE question from Questions 30–32
- Allow about 45 minutes for this section

Section I
75 marks

Part A – 20 marks

Attempt Questions 1–20

Allow about 35 minutes for this part

Use the multiple-choice answer sheet for Questions 1–20.

- 1 What should a literature review provide?
- A. An analysis of primary data
 - B. A hypothesis with focus questions
 - C. A critique of information already written about the topic
 - D. An outline of limitations associated with the research procedures used
- 2 What is the main type of assistance provided by support groups for first-time parents?
- A. Emotional
 - B. Employment
 - C. Financial
 - D. Housing
- 3 Which row of the table correctly matches the research method to one of its limitations?

| | <i>Research method</i> | <i>Limitation</i> |
|----|------------------------|----------------------------|
| A. | Case study | Time consuming |
| B. | Observation | Data is current |
| C. | Interview | Data is not current |
| D. | Questionnaire | Can be sent to more people |

- 4 Which of the following would best assist young people to improve their sense of identity?
- A. Engaging in safe behaviours
 - B. Participating in employment
 - C. Having appropriate health care
 - D. Being dependent on their parents

- 5 Olivia has a chronic disability that decreases her ability to undertake daily tasks and responsibilities for her two children aged two and five years old.

Which of the following could best assist Olivia?

- A. Housing and insurance
 - B. Counselling and education
 - C. Legal aid and employment
 - D. Financial support and child care
- 6 In the research process, what is the next step after presenting the raw data in tables and graphs?
- A. Analysing research results
 - B. Assembling information in the appendix
 - C. Considering ethical behaviour in research
 - D. Drawing valid conclusions from the research results
- 7 Which of the following is true of adoptive parents?
- A. They are biologically connected to their child.
 - B. They are legally allowed to select their child's religion.
 - C. They cannot make medical decisions on their child's behalf.
 - D. They have used birthing technologies to assist them to have their child.
- 8 The *prevalence* of a group within a community refers to the
- A. number of groups that are within a community.
 - B. level of community organisations supporting members of a specific group.
 - C. number of individuals who are members of a specific group in the community.
 - D. level of acceptance given to a specific group by the community and government organisations.

- 9** Which of the following is a benefit of preventing youth homelessness?
- A. It complies with the Anti-Discrimination Act.
 - B. It increases the number of counsellors available.
 - C. It reduces government payments such as youth allowance.
 - D. It leads to better education and economic outcomes for the individual.

- 10** A researcher ignores an agreement about not sharing participant data.

This is an example of

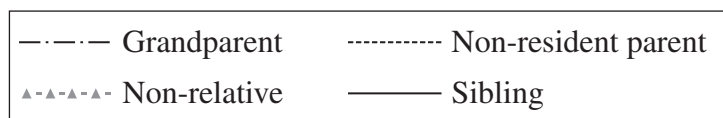
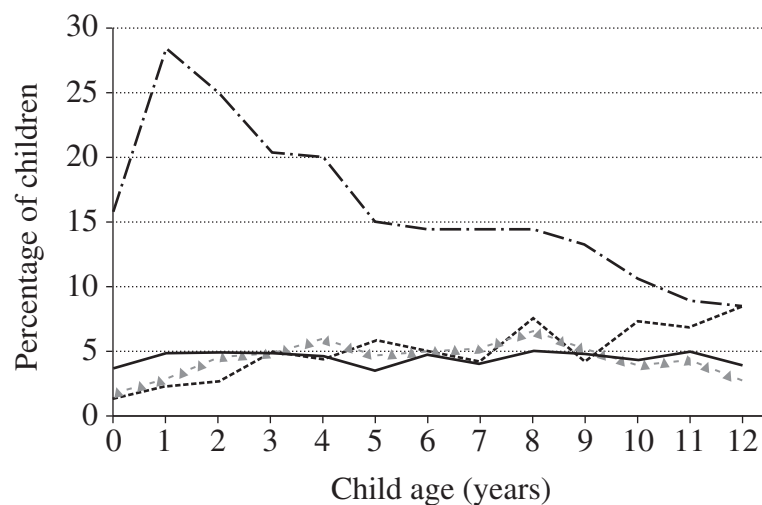
- A. bias.
 - B. invalid data.
 - C. poor reliability.
 - D. breach of privacy.
- 11** A researcher creates a sample group that does not represent a cross-section of the population.

How would this affect the quality of the research?

- A. The data would lack validity.
 - B. The conclusions would be unbiased.
 - C. The process would lack respect for the participants.
 - D. The process would break anonymity and confidentiality agreements.
- 12** Which of the following best describes respite care for a physically disabled person?
- A. Making modifications to the person's social environment
 - B. A community nurse prescribing rest and medications for the person
 - C. A health case worker from the local hospital making weekly visits to the person's home
 - D. A trained carer giving the primary carer of the person temporary relief from their duties

- 13** Which of the following contributes to research being free from bias?
- A. The researcher references correct sources.
 - B. The researcher avoids asking leading questions.
 - C. The participants select which questions to answer.
 - D. The participants give permission before research is conducted.
- 14** Which of the following lists the most significant needs for people with disabilities and youth?
- A. Social status, safety and security
 - B. Access to transport and social status
 - C. Adequate standard of living, safety and security
 - D. Access to transport and adequate standard of living
- 15** How can a researcher demonstrate integrity when conducting research?
- A. By modifying data to fit into tables and graphs
 - B. By analysing data using only personal preference
 - C. By maintaining participants' privacy only when they request it
 - D. By providing an appropriate disclaimer at the start of the research process
- 16** Which of the following is most likely to lead to an increase in the number of primary carers in the future?
- A. The increasing wage for health care workers
 - B. The increasing percentage of homeless people in NSW
 - C. The increasing percentage of people aged 65 years and over
 - D. The increasing percentage of young people participating in the workforce

- 17 Why is it important for young people to have access to free counselling without parental consent?
- They may be at risk within the home.
 - They are going through a period of physiological change.
 - They are old enough to be active members of the community.
 - They may be experiencing a period of unsettled social change.
- 18 The graph provides information about carers, other than resident parents, for children under the age of 12.



ABS Childhood Education and Care Survey (CEaCS), 2011, <https://aifs.gov.au/publications/child-care-and-early-childhood-education-australia>, Commonwealth of Australia (<https://aifs.gov.au/copyright>) CC BY 4.0

Which of the following statements is correct?

- More 8-year-olds are being cared for by a sibling than by a non-resident parent.
- Children are most likely to be cared for by a non-resident parent at the age of 9.
- More 5-year-olds are being cared for by a sibling than by any other type of carer.
- Grandparents are more likely than any other type of carer to look after 3-year-olds.

- 19** Both culture and socioeconomic status are most likely to influence which parental decision?
- A. To return to work
 - B. To access childcare subsidies
 - C. To use a particular parenting style
 - D. To socialise a child without gender stereotyping
- 20** Which of the following best describes stratified sampling?
- A. Each individual in the population is chosen entirely by chance.
 - B. Individuals are selected at regular intervals from the population.
 - C. The population is divided into subgroups and only individuals in certain subgroups are randomly selected.
 - D. The population is divided into subgroups and individuals are then randomly selected from each subgroup.

BLANK PAGE

| | | | | |
|--|--|--|--|--|
| | | | | |
|--|--|--|--|--|

Centre Number

Community and Family Studies

| | | | | | | | | | |
|--|--|--|--|--|--|--|--|--|--|
| | | | | | | | | | |
|--|--|--|--|--|--|--|--|--|--|

Student Number

Section I Part B Answer Booklet

55 marks

Attempt Questions 21–29

Allow about 1 hour and 40 minutes for this part

Instructions

- Write your Centre Number and Student Number at the top of this page.
- Answer the questions in the spaces provided. These spaces provide guidance for the expected length of response.
- Extra writing space is provided at the back of this booklet. If you use this space, clearly indicate which question you are answering.

Please turn over

Question 21 (8 marks)

- (a) Outline the research process that should be used when conducting research.

4

.....

.....

.....

.....

.....

.....

.....

.....

.....

.....

.....

.....

.....

.....

.....

.....

.....

.....

.....

.....

.....

.....

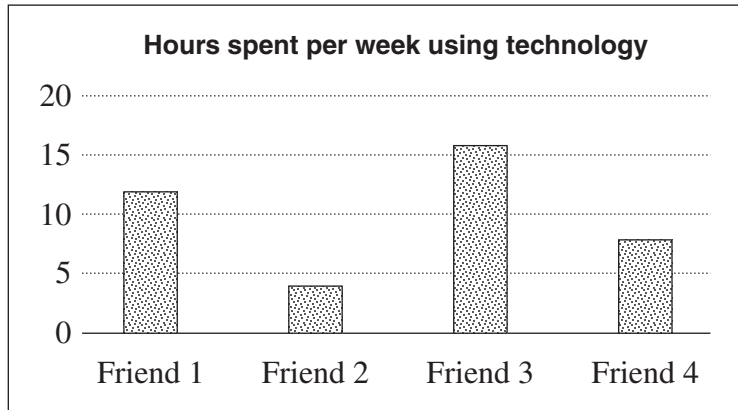
Question 21 continues on page 11

Do NOT write in this area.

Question 21 (continued)

- (b) Jason conducted an Independent Research Project investigating the impact of technology on the wellbeing of teenagers. He asked four friends how much time they spent on their phone in a week, and then drew conclusions based on the data he collected.

4



Explain how Jason could improve both the reliability and validity of his research.

.....

.....

.....

.....

.....

.....

.....

.....

.....

.....

.....

.....

.....

.....

.....

.....

.....

.....

.....

.....

.....

.....

End of Question 21

Do NOT write in this area.

Question 25 (4 marks)

How should individuals treat people who have a disability with dignity and respect?

4

.....

.....

.....

.....

.....

.....

.....

.....

.....

.....

.....

.....

.....

.....

.....

.....

Please turn over

Do NOT write in this area.

Question 28 (continued)

.....

.....

.....

.....

.....

.....

.....

End of Question 28

Please turn over

Do NOT write in this area.

Question 29 (continued)

.....

.....

.....

.....

.....

.....

.....

End of Question 29

Do NOT write in this area.

Section I Part B extra writing space

If you use this space, clearly indicate which question you are answering.

Do NOT write in this area.

Community and Family Studies

Section II

25 marks

Attempt ONE question from Questions 30–32

Allow about 45 minutes for this section

Answer the question in the Section II Writing Booklet. Extra writing booklets are available.

Your answers to part (c) of the question will be assessed on how well you:

- demonstrate knowledge and understanding of societal influences on wellbeing relevant to the question
 - apply the skills of critical thinking and analysis
 - communicate ideas and information using relevant examples
 - present a logical and cohesive response
-

Question 30 — Family and Societal Interactions (25 marks)

Answer parts (a) and (b) of the question on pages 2–4 of the Writing Booklet.

- (a) Describe how the community recognises the aged as valuable citizens. **4**
- (b) Explain how community support groups provide for the wellbeing of families. **6**

Answer part (c) of the question on pages 5–8 of the Writing Booklet.

- (c) Evaluate the effectiveness of government legislation in supporting and protecting the welfare of children. **15**

OR

Please turn over

Question 31 — Social Impact of Technology (25 marks)

Answer parts (a) and (b) of the question on pages 2–4 of the Writing Booklet.

- (a) Describe how technology has led to efficient transport and travel. **4**
- (b) Explain the effect technology can have on interpersonal relationships within the family. **6**

Answer part (c) of the question on pages 5–8 of the Writing Booklet.

- (c) Analyse the economic and ethical effects of emerging technologies on the community. **15**

OR

Question 32 — Individuals and Work (25 marks)

Answer parts (a) and (b) of the question on pages 2–4 of the Writing Booklet.

- (a) Describe the factors that contribute to youth unemployment. **4**
- (b) Explain how parents could utilise workplace structures to manage multiple roles. **6**

Answer part (c) of the question on pages 5–8 of the Writing Booklet.

- (c) Analyse the possible effects on a family when one member of the family changes their pattern of work due to social factors. **15**

End of paper